

LU-2800 Series

Semi-dry Direct-drive, Unison-feed, Lockstitch Machine with Vertical-axis Large Hook

High and long arm has been adopted.
The long distance from the machine arm to the needle contributes to improved workability.

The LU-2800 Series is a unison-feed, lockstitch machine with a vertical-axis large hook which is provided with substantially improved functions and performance.



LU-2818-7/CP-18



LU-2868-7/CP-18

LU-2800 Series

1-needle type

LU-2810

1-needle, Vertical-axis 2.0 Fold-Capacity Hook without automatic thread trimmer

LU-2810-7

1-needle, Vertical-axis 2.0 Fold-Capacity Hook with automatic thread trimmer

LU-2818AL-7

1-needle, Vertical-axis 2.7 Fold-Capacity Hook with automatic thread trimmer (long-pitch type)

LU-2828A-7

1-needle, Vertical-axis 2.7 Fold-Capacity Hook with automatic thread trimmer (needle thread roll-in and shorter - thread remaining type)

2-needle type

LU-2860

2-needle, Vertical-axis 2.0 Fold-Capacity Hook without automatic thread trimmer

LU-2860-7

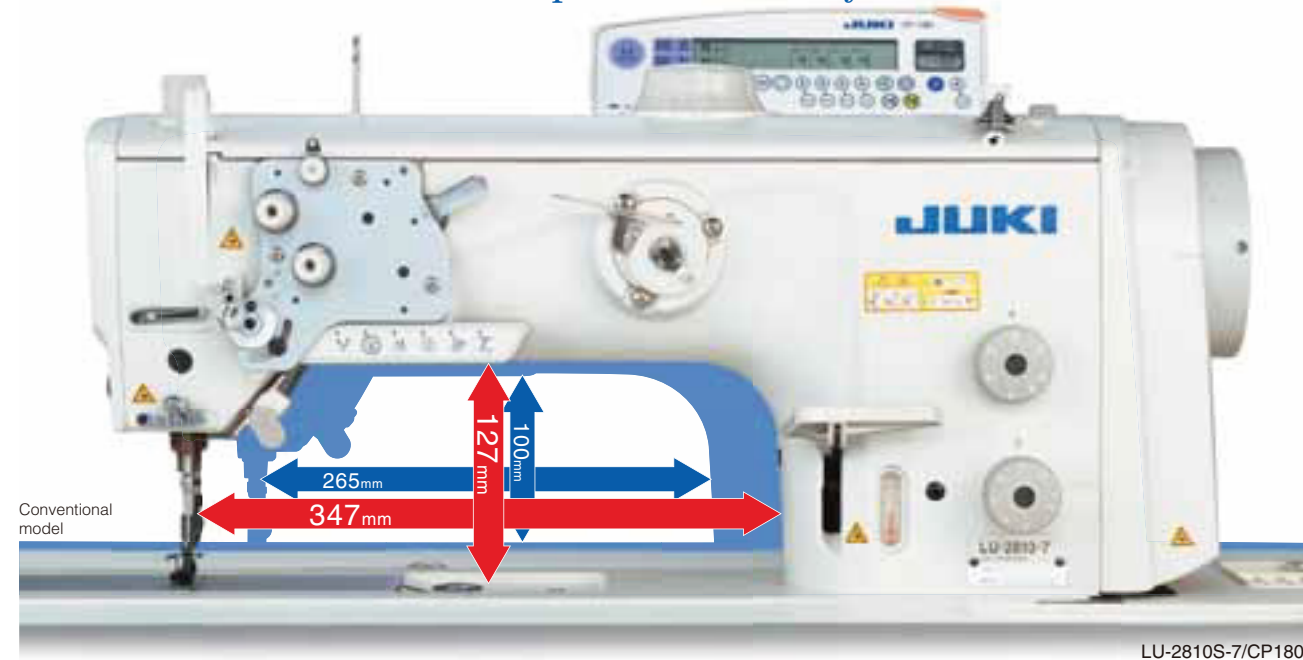
2-needle, Vertical-axis 2.0 Fold-Capacity Hook with automatic thread trimmer

LU-2868AL-7

2-needle, Vertical-axis 2.7 Fold-Capacity Hook with automatic thread trimmer (long-pitch type)

Functions for improving seam quality and workability.

▶ The long distance from the machine arm to the needle contributes to improved workability



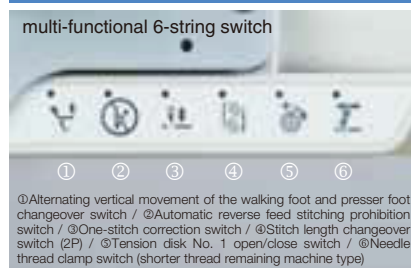
▶ Thread tightness can be kept same, even the multi-level of material.

Double tension provided as : standard



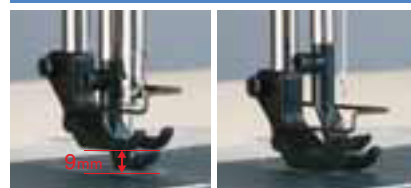
Single or Double can be set easy through Multi-functional 6-string switch, regarding the machine with trimmer.(Available for more thick material)

Multi-functional 6-string switch (thread trimming switch)



In addition to the one-touch type reverse feed switch, a multi-functional 6-string switch is also provided. Changeover of the amount of the alternating vertical movement of the walking foot and the presser foot and changeover of the stitch length can be done simply with this one switch.

Walking-foot/presser-foot alternating vertical movement mechanism



The sewing machine has adopted a feed mechanism which keeps the ratio between the amount of the vertical movement of the walking foot and that of the presser foot constant even when the material is changed. The amount of the alternating vertical movement of the walking foot and the presser foot is 9 mm at the maximum. This amount can be set with ease by means of the large dial installed on the upper section of the sewing machine.

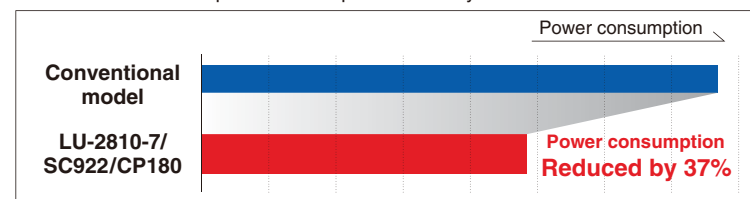
Mechanisms have been designed taking maintainability and environmental friendliness into consideration.

High-torque direct-drive motor is installed.



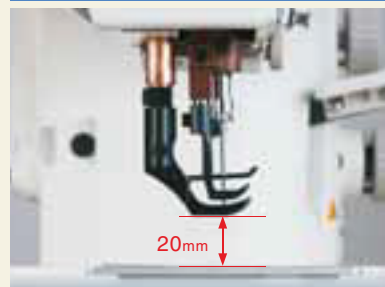
The direct-drive motor system has been adopted by all of the sewing machines with a thread trimmer. As a result, the sewing machine starts up swiftly and promises increased stop accuracy, thereby demonstrating improved responsiveness. In addition, the machine is no longer provided with a V-belt. This means that the adoption of the direct-drive motor is also effective in the elimination of belt shavings. Power is directly transmitted from the motor to the sewing machine, thereby contributing to reduced power consumption. (This sewing machine reduces power consumption by 37% as compared with the conventional models.) Adoption of a direct-driven main shaft and a revamping of mechanism design contribute to remarkably reduced noise. Noise has been reduced by 3.5dB as compared with the conventional model to produce this operator-friendly machine.

The sewing machine provided with a thread trimmer has adopted a high-torque direct-drive motor which is suitable for heavy-weight materials. As a result, the sewing machine is excellent at its responsiveness and ensures increased penetration into the material even when sewing multi-layered parts.



Dramatically advanced availability for material

Higher lift of the presser bar



A presser bar height of 20 mm is achieved when using the automatic presser bar lifting lever. Thanks to this feature, the process of joining leather and heavy-weight sponges, which are usually used as materials for expensive sofas, can be carried out with ease.

Eccentricity of the feed driving cam is adjustable.



Adjustment of the eccentricity of the feed driving cam has been enabled. As a result, the sewing machine is able to perform sewing with the feed that is best-suited to the material and thread used. It is no longer necessary to prepare other subclass model sewing machines.

New lubrication system



Lubrication system is powerful and stable even low speed.

New bobbin thread spool device



New bobbin thread spool device is no necessity of rolling thread manually.

Stitch length can be changed over among different lengths.



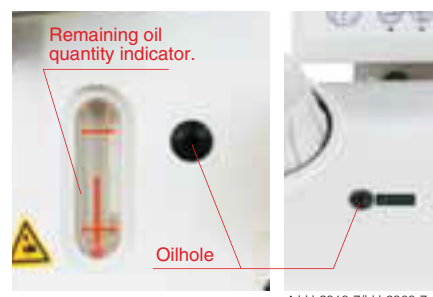
The sewing machine with a thread trimmer is provided as standard with a 2-pitch dial. One unit of this sewing machine is able to sew different sewing lengths since the sewing length can be instantaneously changed over.

2.0 / 2.7 fold-capacity hook



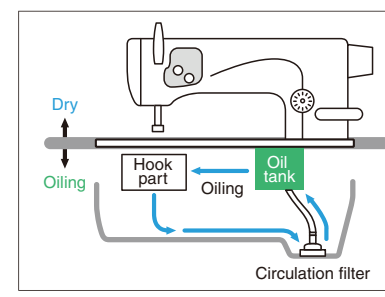
The hook which can be adjusted with screw amount of needle guard contact to needle. The needle guard can be easily adjusted. Therefore, it prevents stitch skipping and wear of hook edge.

Easy to find remaining oil quantity



* LU-2818-7/LU-2868-7

New-type tank style automatic lubrication mechanism has been adopted.



The oil dropped from the hook and its surrounding sections into the under-cover is filtered to remove dirt and dust and is then returned to the oil tank. This method saves the effort of oiling and reduces oil consumption. The remaining oil quantity indicator is provided on the front face of the machine head. Lubrication can be carried out without tilting the machine head.

JUKI ECO PRODUCTS The LU-2810-7 is an eco-friendly product which complies with JUKI ECO PRODUCTS standards for protecting the environment.

- This sewing machine reduces power consumption by 37% as compared with the conventional models.
- As compared with the conventional model, LU-2810-7 reduces noise by 3.5 dB.
- The sewing machine complies with the "Juki Group Green Procurement Guidelines" on the use of hazardous substances, which is stricter than other restrictions, such as those of the RoHS Directive.

For details of JUKI ECO PRODUCTS, refer to: http://www.juki.co.jp/eco_e/index.html

*The RoHS Directive is an EU Directive limiting the use of 6 hazardous substances (lead, hexavalent chromium, mercury, cadmium, PBB and PBDE) in electrical and electronic equipment. The Juki Green Procurement Guideline is the voluntarily established criteria to eliminate not only the aforementioned six substances, but also other ones which also adversely affect the environment.

LU-2810

Semi-dry Direct-drive, 1-needle, Unison-feed, Lockstitch Machine with Vertical-axis 2.0 Fold-Capacity Hook

LU-2860

Semi-dry Direct-drive, 2-needle, Unison-feed, Lockstitch Machine with Vertical-axis 2.0 Fold-Capacity Hook

High and long arm has been adopted. Wide machine bed area contributes to improved workability. Direct-drive, unison-feed, Lockstitch machine with a vertical-axis large hook providing substantially improved functions and performance.



LU-2860

LU-2828A-7

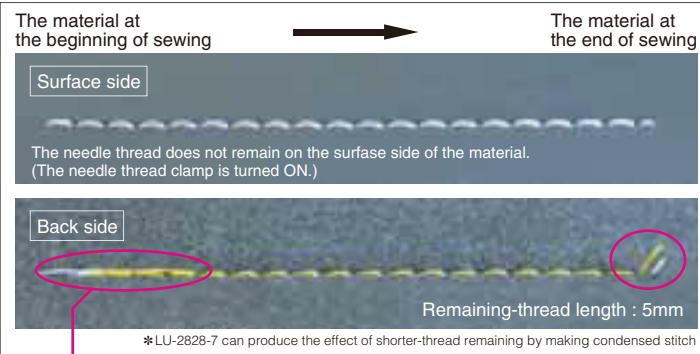
Semi-dry Direct-drive, 1-needle, Unison-feed, Lockstitch Machine with Vertical-axis 2.7 Fold-Capacity Hook (needle thread roll-in and shorter - thread remaining type)

The shorter-thread remaining type LU-2828A-7 is a high-performance sewing machine. It leaves a shorter thread on the material at the beginning of sewing by means of the needle thread clamp device, as well as at the end of sewing by means of the thread trimmer which is provided with a shorter-thread remaining function. This means that manual thread nipping both at the beginning and at the end of sewing is no longer required, thereby helping reduce operator fatigue. Thanks to the adoption of a 2.7-fold hook, the frequency of bobbin thread changing is reduced and workability is improved.



LU-2828-7

Beautiful finished seams



Needle thread clamping device

This device pulls the needle thread into the wrong side of the material at the beginning of sewing, thereby ensuring more beautifully-finished seams.

The shorter-thread trimming mechanism

(needle thread roll-in and shorter-thread remaining type)

The thread trimming mechanism has been completely renewed. The industry's shortest remaining thread length achieved by trimming the thread close to the fixed knife at the last stitch (condensed stitch). (The length of remaining needle thread is 5mm)



LU-2810-7

Semi-dry Direct-drive, 1-needle, Unison-feed, Lockstitch Machine with Vertical-axis 2.0 Fold-Capacity Hook with automatic thread trimmer

LU-2860-7

Semi-dry Direct-drive, 2-needle, Unison-feed, Lockstitch Machine with Vertical-axis 2.0 Fold-Capacity Hook with automatic thread trimmer

High and long arm has been adopted. The machine is suited to the sewing of car seats, sofas and bags. It is a sewing machine provided with dramatically improved workability and functions which are required for sewing large products and extra heavy-weight materials.



LU-2810-7

LU-2818AL-7

Semi-dry Direct-drive, 1-needle, Unison-feed, Lockstitch Machine with Vertical-axis 2.7 Fold-Capacity Hook with automatic thread trimmer (long-pitch type)

LU-2868AL-7

Semi-dry Direct-drive, 2-needle, Unison-feed, Lockstitch Machine with Vertical-axis 2.7 Fold-Capacity Hook with automatic thread trimmer (long-pitch type)

This model is the most-desired sewing machine for sewing furniture such as sofas. It is best-suited to topstitching with a long stitch pitch. During the topstitching process, the longer distance from the machine arm to the bed, in particular, effectively demonstrates the machine's improved workability.

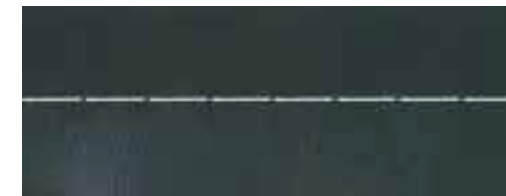


LU-2868AL-7

Long-pitch

Long pitch sewing is suitable for decoration sewing of furniture etc.

Long-pitch
(The maximum stitch length is 12mm at the pitch dial.)



General stitch length is 6 mm.



2.7 fold-capacity hook

With the adoption of this vertical-axis 2.7 fold-capacity hook, the frequency of bobbin thread winding is reduced, promising sewing work of increased efficiency. The hook which can be adjusted with screw amount of needle guard contact to needle.



1-needle type

(Gauge for Europe)

List of gauges for the LU-2800A

Model	Throat plate	Feed dog	Walking foot	Presser foot	Slide plate of left	Slide plate of right	Front bed slide
LU-2810A	40112211	40133272	10711653	10712552	40112224	40112225	40147918
LU-2810A-7	40126350						
LU-2818A-7	40147949	40125925	10712354			40147944	

Optional walking foot for the LU-2800A

Size (mm)	Piping		Piping	
	Walking foot	Presser foot	Walking foot	Presser foot
3mm	10745354	10747350	10746352	10747350
4mm	10745453	10747459	10746451	10747459
5mm	10745552	10747558	10746550	10747558
6mm	10745651	10747657	10746659	10747657

*For general piping

*The needle position with respect to the pipe is adjustable.

Right single-sided presser for sewing material edges		Left single-sided presser for sewing material edges		Wider type with increases efficiency of feed	
Walking foot	Presser foot	Walking foot	Presser foot	Walking foot	Presser foot
10711851	10712859	10711950	10712958	10712057	10713055

For multi-layered sections Dual-purpose type for both multi-layered sections and flat sections of material		For multi-layered sections with a smoother feed of both multi-layered and flat sections of material		For heavy-weight sponges Suitable for highly resilient materials	
Walking foot	Presser foot	Walking foot	Presser foot	Walking foot	Presser foot
10711653 (Standard)	10758456	10711653 (Standard)	10712651	10711752	10712750

Optional feed dog for the LU-2810A

Feed dog	
LU-2810A (-7)	LU-2818A-7
40133273	40133272
2.5x3.5 width 7.7	2.2x3.3 width 7.7
40125925	40125925
2.5x3.5 width 7.7 Chamfered by an angle of 60 degrees	2.5x3.5 width 7.7 Chamfered by an angle of 60 degrees

Side plate with a window for the LU-2810A

Side plate with window	
LU-2810A (-7)	LU-2818A-7
40133312	40155087

1-needle type

(Standard gauge)

List of gauges for the LU-2800S

Model	Throat plate	Feed dog	Walking foot	Presser foot	Slide plate of left	Slide plate of right
LU-2810S	40112212	40133270	21350152	B14700530A0	40112224	40112225
LU-2810S-7	40126349					

Optional walking foot for the LU-2810S

Size (mm)	Piping		Piping		Piping	
	Walking foot	Presser foot	Walking foot	Presser foot	Walking foot	Presser foot
3.9mm (5/32)	B1478245000	B15302450AC	—	—	B147224500C	B15272450AC
4.8mm (3/16)		B15302450AD	B147924500D	B15312450AD	B147424500D	B15272450AD
6.4mm (1/4)		B15302450AF	B147924500F	B15312450AF	B147424500F	B15272450AF
7.9mm (5/16)		B15302450AH	B147924500H	B15312450AH	B147424500H	B15272450AH
9.5mm (3/8)		B15302450AK	—	—	B147424500K	B15272450AK

Toothed		Toothed		Toothed	
Walking foot	Presser foot	Walking foot	Presser foot	Walking foot	Presser foot
10338309	B1525563SA0	B147624500A	B15292450AA	B1470562B00	B1525562BA0

For tape sewing (toothed type for horizontal feed)		For horizontal feed		Slotted	
Walking foot	Presser foot	Walking foot	Presser foot	Walking foot	Presser foot
MAQ09307000	MAQ093080A0	MAN10452000	MAQ093080A0	B1470245000	B15242450A0

Slotted		Slotted		Single-sided wider type	
Walking foot	Presser foot	Walking foot	Presser foot	Walking foot	Presser foot
40041246	40041243	D1470241E0A	B1525241HA0	10325306	10325157

Sole with rounded edges	
Walking foot	Presser foot
10326205	10326304

Optional feed dog for the LU-2810S

LU-2810A (-7)	
Feed dog	
40133271	40125921
2.5x3.5 width 6.2	2.5x3.5 width 6.2 Chamfered by an angle of 60 degrees

Side plate with a window for the LU-2800S

LU-2810A (-7)	LU-2828A-7
Side plate with window (Left)	Side plate with window (Right)
40133312	40155087

■ List of gauges for the LU-2860A

Gauge set			Throat plate			Feed dog	Needle clamp Asm.	Feed foot Asm.	Presser foot Asm.	Slide plate
Code	Gauge set No.	Size	LU-2860A	LU-2860A-7	LU-2868AL-7	Part No.	Part No.	Part No.	Part No.	Part No.
	40150760	3mm	40144316			40144344	40144367	40061164	40144390	40112225
	40150775	3mm		40144330						
A	40150761	4mm	40144317			40144352	40144369	40061806	10781557	40112225
A	40150776	4mm		40144331						
B	40150762	6mm	40126976			40126142	40038778	40135589	10781656	40127056
B	40150777	6mm		40126986						
B	40155973	6mm			40147951	40126143	40038776	40135590	10781755	40127056
C	40150763	8mm	40126977							
C	40150778	8mm		40126987		40126144	40038774	40038898	10781854	40127056
C	40155974	8mm			40147952					
D	40150764	10mm	40126978			40126144	40038774	40038898	10781854	40127056
D	40150779	10mm		40126988						
D	40155975	10mm			40147953	40126145	40038772	40095748	10781953	40127056
E	40150765	12mm	40126979							
E	40150780	12mm		40126989		40144354	40144371	40144407	10782050	40144416
E	40155976	12mm			40147954					
	40150766	14mm	40144319			40144354	40144371	40144407	10782050	40144416
	40150781	14mm		40144333						
	40150767	16mm	40144320			40144355	40144373	40144408	10782159	40144416
	40150782	16mm		40144334						
	40150768	18mm	40144321			40144356	40144375	40144409	10782258	40144416
	40150783	18mm		40144335						
	40150769	20mm	40144322			40144357	40144377	40144410	10782357	40144416
	40150784	20mm		40144336						
	40150770	22mm	40144323			40144358	40144379	40144411	10782456	40144417
	40150785	22mm		40144337						
	40150771	24mm	40144324			40144359	40144381	40144412	10782555	40144417
	40150786	24mm		40144338						
	40150772	25mm	40144325			40144360	40144383	40144413	40144391	40144417
	40150787	25mm		40144339						
	40150773	30mm	40144327			40144362	40144385	40144414	10782654	40144418
	40150788	30mm		40144341						
	40150774	36mm	40144328			40144363	40144387	40144419	10782753	40144418
	40150789	36mm		40144342						

* The [bed slide] is not included in the gauge set. (For the 6 to 12 mm gauges, the bed slide which is provided as standard at the time of shipment is applicable.)
 * The finger guard is a component included in the presser foot (asm.).

■ Optional walking foot for the LU-2800A

Walking foot with groove (needle hole: φ2.1mm)			
Needle gauge (mm)	Part No.	Needle gauge (mm)	Part No.
4	10783058	18	10783751
6	10783157	20	10783850
8	10783256	22	10783959
10	10783355	24	10784056
12	10783454	30	10784155
14	10783553	36	10784254
16	10783652		

*The needle hole in the sole of the walking foot has a slit (1 mm in width and 0.5 mm in depth) on the opposite side of the operator.
 *Please use the "presser foot asm." of "List of gauges for the LU-2860A".

■ Presser foot with center guide for the LU-2800A

Needle gauge (mm)	Walking foot	Presser foot
	6	40038854 *1
8	40038852 *1	40038808
8	40067204 *2	
10	40038850 *1	40038806
10	40039271 *2	
12	40038848 *1	40038802
12	40095750 *2	

*1 Diameter of the needle entry hole in the walking foot: φ2.1mm
 *2 Diameter of the needle entry hole in the walking foot: φ3mm

■ Side plate with a window for the LU-2800A

Side plate with window (right & left)	
LU-2868AL-7	LU-2860A (-7)
40156017	4013312

■ List of gauges for the LU-2860S

Gauge set			Throat plate		Feed dog	Needle clamp Asm.	Feed foot Asm.	Presser foot Asm.	Slide plate
Code	Gauge set No.	Size (inch/mm)	LU-2860S	LU-2860S-7	Part No.	Part No.	Part No.	Part No.	Part No.
C	40150790	1/8 / 3.2	40144430		40144451	21371554	21370150	21370853	40112225
C	40150802	1/8 / 3.2		40144441					
D	40150791	3/16 / 4.8	40127004		40126146	21368154	21367156	21367651	40112225
D	40150803	3/16 / 4.8		40127023					
F	40150792	1/4 / 6.4	40127005		40126147	21368253	21367255	21367750	40127056
F	40150804	1/4 / 6.4		40127024					
H	40150793	5/16 / 7.9	40127006		40126148	21368352	21367354	21367859	40127056
H	40150805	5/16 / 7.9		40127025					
K	40150794	3/8 / 9.5	40127007		40126149	21368451	21367453	21367958	40144416
K	40150806	3/8 / 9.5		40127026					
L	40150795	1/2 / 12.7	40144432		40144452	21368550	21367552	21368055	40144416
L	40150807	1/2 / 12.7		40144443					
	40150796	5/8 / 15.9	40144433		40144453	21371653	21370259	21370952	40144416
	40150808	5/8 / 15.9		40144444					
	40150797	3/4 / 19.1	40144434		40144454	21371752	21370358	21371059	40144417
	40150809	3/4 / 19.1		40144445					
	40150798	7/8 / 22.2	40144435		40144455	21371851	21370457	21371158	40144417
	40150810	7/8 / 22.2		40144446					
	40150799	1 / 25.4	40144436		40144456	21371950	21370556	21371257	40144417
	40150811	1 / 25.4		40144447					
	40150800	1-1/8 / 28.6	40144438		40144458	21372057	21370655	21371356	40144418
	40150812	1-1/8 / 28.6		40144449					
	40150801	1-1/4 / 31.8	40144439		40144459	21372156	21370754	21371455	40144418
	40150813	1-1/4 / 31.8		40144450					

*The bed slide is not included in the gauge set.

■ Optional walking foot for the LU-2860S

Needle gauge (inch)	Walking foot with groove	Walking foot adjustable walkingfoot	Walking foot adjustable walkingfoot with toothed
	1/8	21372255	21373451
3/16	21372354	21373550	B1470521DA0
1/4	21372453	21373659	B1470521FA0
5/16	21372552	21373758	B1470521HA0
3/8	21372651	21373857	B1470521KA0
1/2	21372750	21373956	B1470521LA0
5/8	21372859	21374053	B1470521MA0
3/4	21372958	21374152	B1470521NA0
7/8	21373055	21374251	B1470521PA0
1	21373154	21374350	B1470521QA0
1-1/8	21373253	21374459	—
1-1/4	21373352	21374558	B1470521SA0

*Please use the "presser foot asm." of "List of gauges for the LU-2860S".

■ Presser foot with center guide for the LU-2800S

Needle gauge (inch)	Walking foot	Presser foot	Walking foot with slit	Presser foot
	5/16	21372552	21374657	21373758
3/8	21372651	21374756	21373857	21374756
1/2		21374855	21373856	21374855

*Place an order for the walking foot and presser foot as a set.

ATTACHMENTS

Suspended ruler H152

Description	Parts No.
Suspended ruler (asm.) H152	MAH-152010A0
Screw	SM6061402TP x2

SPECIFICATIONS

Model name	LU-2810	LU-2860	LU-2810-7	LU-2860-7
Type	1-needle	2-needle	1-needle with automatic thread trimmer	2-needle with automatic thread trimmer
Max. sewing speed	3,000sti/min	2,700sti/min	3,000sti/min	2,700sti/min
Max. stitch length	9mm			
Stitch length dial	1 pitch dial		2 pitch dial	
Presser foot	Auto: 20mm, By hand: 10mm			
Auto lifter	Option		Provide as standard	
Alternating vertical movement	1~9mm			
Alternating vertical movement adjusting method	Large dial			
DL device	—		Provide as standard	
Needle thread tension	Double-tension		Single/Double-tension	
Hook	Vertical axis 2 fold-capacity hook			
Bottom-feed micro-adjustment mechanism	Provided as standard			
Needle	135x17 Nm160 (Nm125~Nm180)			
Thread	#30~#5, B46~B138, Nm=60/3~20/3			
Lubrication	Semi-dry head automatic (Tank system)			
One-touch type reverse feed switch	—		Provide as standard	
Hand switch	—		Multi-functional 6-string switch	
Safety mechanism	Provided as standard (reset with the push of a button)			
Power requirement / Power consumption	—		Single-phase 100~120V / 200~240V , 3-phase 200~240V / 180VA (with automatic thread trimmer)	
Machine head weight	56kg	61kg	66kg	

*"sti/min" stands for "Stitches per Minute."

Model name	LU-2818AL-7	LU-2868AL-7	LU-2828A-7
Type	1-needle, Vertical-axis 2.7 Fold-Capacity Hook with automatic thread trimmer (long-pitch type)	2-needle, Vertical-axis 2.7 Fold-Capacity Hook with automatic thread trimmer (long-pitch type)	1-needle, Vertical-axis 2.7 Fold-Capacity Hook with automatic thread trimmer (needle thread roll-in and shorter - thread remaining type)
Max. sewing speed	3,000sti/min	2,700sti/min	3,000sti/min
Max. stitch length	12mm		9mm
Stitch length dial	2 pitch dial		
Presser foot	Auto: 20mm, By hand: 10mm		
Auto lifter	Provide as standard		
Alternating vertical movement	1~9mm		
Alternating vertical movement adjusting method	Large dial		
DL device	Provide as standard		
Needle thread tension	Single/Double-tension		
Hook	Vertical axis 2.7 fold-capacity hook		
Bottom-feed micro-adjustment mechanism	Provided as standard		
Needle	135x17 Nm160 (Nm125~Nm180)		134x35 Nm140 (Nm125~Nm180)
Thread	#30~#5, B46~B138, Nm=60/3~20/3		
Lubrication	Semi-dry head automatic (Tank system)		
One-touch type reverse feed switch	Provide as standard		
Hand switch	Multi-functional 6-string switch		
Safety mechanism	Provided as standard (reset with the push of a button)		
Power requirement / Power consumption	Single-phase 100~120V / 200~240V , 3-phase 200~240V / 180VA (with automatic thread trimmer)		
Machine head weight	66kg	68kg	62kg

*"sti/min" stands for "Stitches per Minute."

WHEN YOU PLACE ORDERS

Please note when placing orders, that the model name should be written as follows:

without automatic thread trimmer

Machine head

[1-needle type]

Gauge type	Code
Standard gauge	S
Gauge for europe	A

LU2810□□S

Alternating vertical dial	Code
Provided	S

[2-needle type]

Gauge type	Code	Alternating vertical dial	Code
Standard gauge	S	Provided	S
Gauge for europe	A		

LU2860□□S

* In case of "S" type in Gauge type, please choose from below.

Needle Gauge	Code	Needle Gauge	Code	Needle Gauge	Code	Needle Gauge	Code
3.2mm	C	7.9mm	H	4mm	A	10mm	D
4.8mm	D	9.5mm	K	6mm	B	12mm	E
6.4mm	F	12.7mm	L	8mm	C		

* In case of "A" type in Gauge type, please choose from below.

with automatic thread trimmer

Machine head

[1-needle type]

Head type	Code	Gauge type	Code	Wiper and one-touch type reverse feed	Code	
Standard type	10	Standard gauge	S	Wiper	One-touch type reverse feed	
2.7 fold-capacity hook and long-pitch type	18	Gauge for europe	A	Not provided	Provided	0B
2.7 fold-capacity hook, needle thread roll-in and shorter - thread remaining type	28		AL			

*LU-2818 can be select only "AL".
*LU-2828 can be select only "A".

LU28□□□□70BBS

Control Box	Code	Automatic foot lifter	Code	Alternating vertical dial	Code
SC-922	7	Provided (pedal-driven)	B	Provided	S

[2-needle type]

Head type	Code	Gauge type	Code	Control Box	Code	Automatic foot lifter	Code
Standard type	60	Standard gauge	S	SC-922	7	Provided (pedal-driven)	B
2.7 fold-capacity hook and long-pitch type	68	Gauge for europe	A				
			AL				

*LU-2868 can be select only "AL".

LU28□□□□□70BBS

* In case of "S" type in Gauge type, please choose from below.

Needle Gauge	Code	Needle Gauge	Code	Needle Gauge	Code	Needle Gauge	Code	Wiper and one-touch type reverse feed	Code	Alternating vertical dial	Code
3.2mm	C	7.9mm	H	4mm	A	10mm	D	Wiper	One-touch type reverse feed	Code	Provided
4.8mm	D	9.5mm	K	6mm	B	12mm	E	Not provided	Provided	0B	S
6.4mm	F	12.7mm	L	8mm	C						

* In case of "A" and "AL" type in Gauge type, please choose from below.

* This code can be select only LU-2860.

*LU-2868AL cannot be select only "A".

Control box

SC922B□

Power supply	Code
Single-phase 100~120V	S
3-phase 200~240V	D
Single-phase 200~240V (for general export)	K
Single-phase 200~240V (for ce)	N
Single-phase 200~240V (for china)	U

Operation panel

CP18C
CP180C

JUKI

JUKI CORPORATION
SEWING MACHINERY BUSINESS UNIT

- * Specifications and appearance are subject to change without prior notice for improvement.
- * Read the instruction manual before putting the machine into service to ensure safety.
- * This catalogue prints with environment-friendly soyink on recycle paper.



Registered Organization : JUKI CORPORATION Head Office
The Scope of the Registration : The activities of research, development, design, sales, distribution, and maintenance services of industrial sewing machines, household sewing machines and industrial robots, etc., including sales and maintenance services of data entry systems.



www.lidermaq.com
ventas@lidermaq.net